

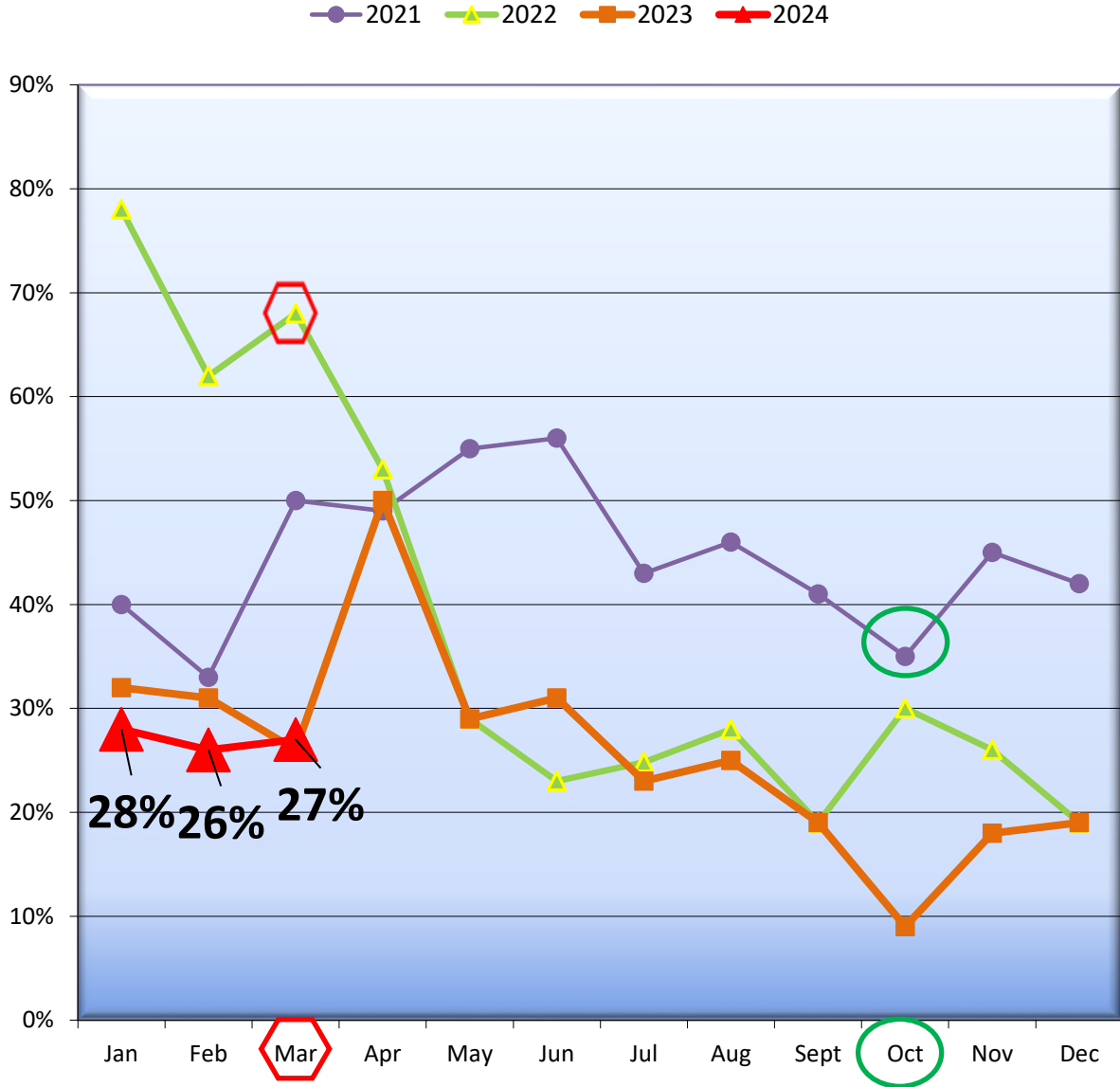
Market Trends

(Area 701 = I-5 down to waterfront & lower Queen Anne down to Sodo)

Downtown Seattle Condos - Absorption rate*

Absorption rate* = $\text{Pendings} \div \text{Actives}$

Pre-Owned Downtown Condos



*This Chart is used to determine the percent of Active inventory changing status to a Pending sale (Pending Sales are offers that been accepted but are not closed) and indicate the velocity of the market. The higher the percentage indicates movement towards a seller's market and a lower percentage indicates movement towards a buyer's market.

Data source: Coldwell Banker Bain - Lake Union
 Data derived from NWMLS Statistical Summary Report 3/31/2024
 Prepared by DAVID PITNEY