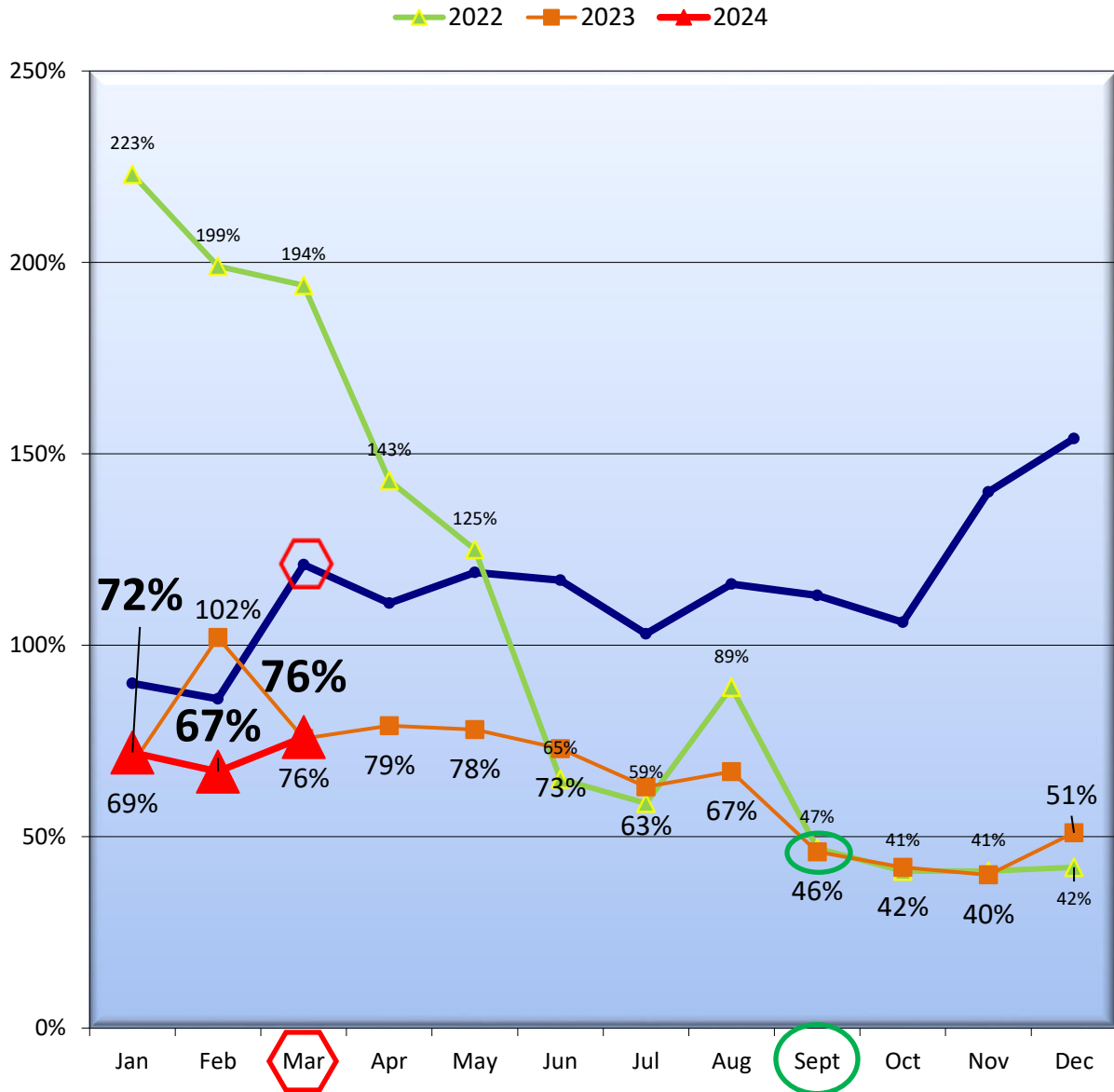


King County Absorption rate* of Condos

Absorption rate* = (Pendings ÷ Actives)

Ratio of Listed KC Condos showing Sold



*This Chart is used to determine the percent of Active inventory changing status to a Pending sale (Pending Sales are offers that been accepted but are not closed) and indicate the velocity of the market. The higher the percentage indicates movement towards a seller's market and a lower percentage indicates movement towards a buyer's market.

Data source: Coldwell Banker Bain - Lake Union
 Data derived from NWMLS Statistical Summary Report 2/29/2024
 Prepared by DAVID PITNEY